

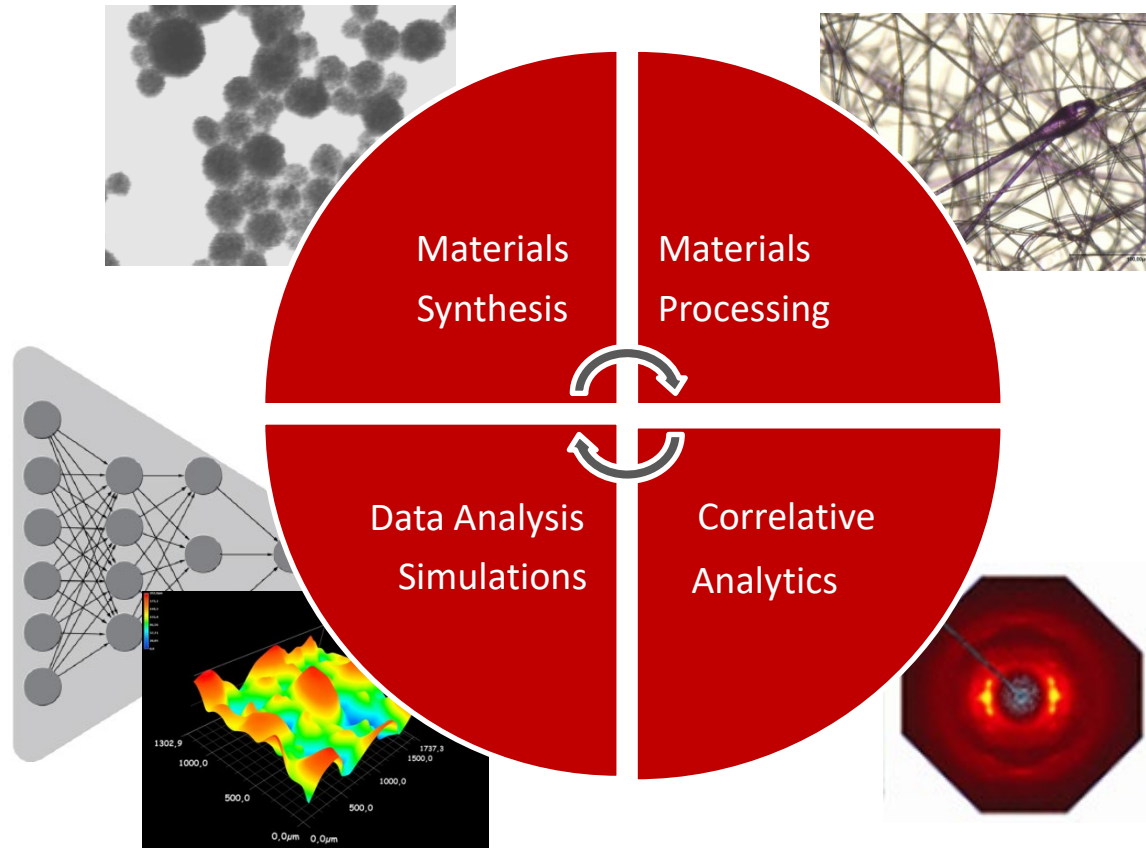
Avatare für Palliative Care

Prof. Dr. Alex Dommann und Prof. Dr. René Rossi

Universität Bern und Empa

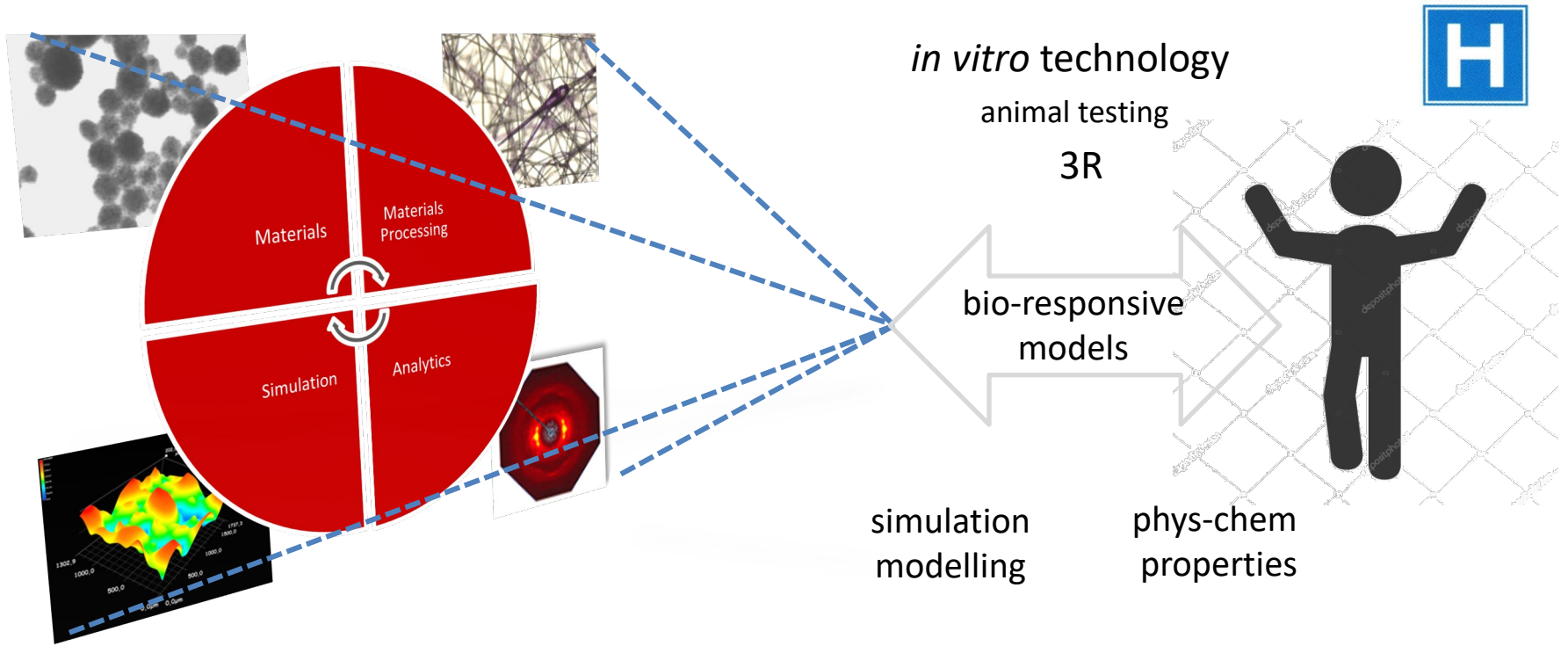
Donnerstag, 16. 3.2023, Zürich

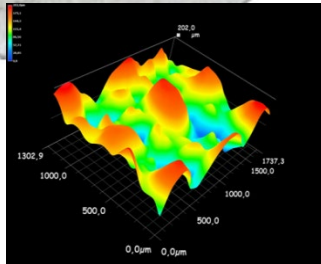
ACCELERATION OF MATERIAL DEVELOPMENT CYCLES AND PREDICTION



high content data high throughput data
Comprehensive, multiscale & multilayer characterization data from e.g. analytical imaging 'omics'-based data

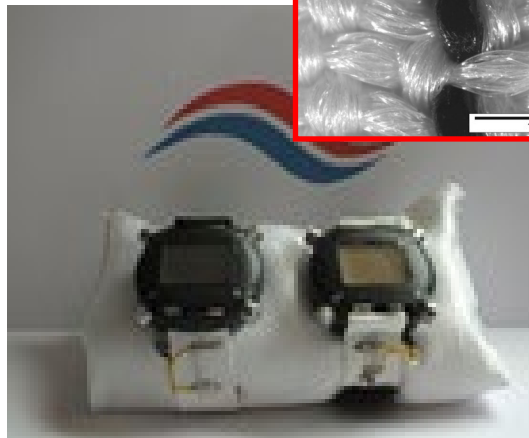
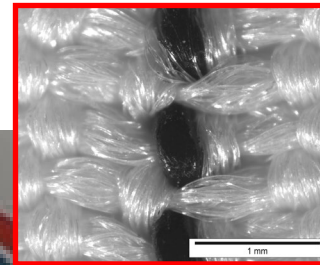
Health & Performance





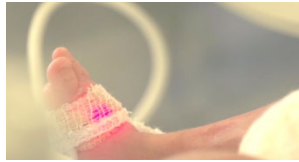
Decubitus preventive
bedsheet

Piezoresistive fiber for
blood pressure
measurement

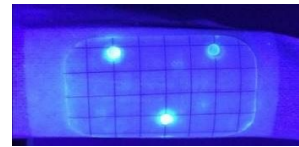


Cooling garment
for MS patients

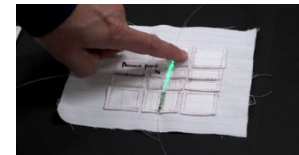
Disappearing for health



Oxygen saturation



pH-value



Movement

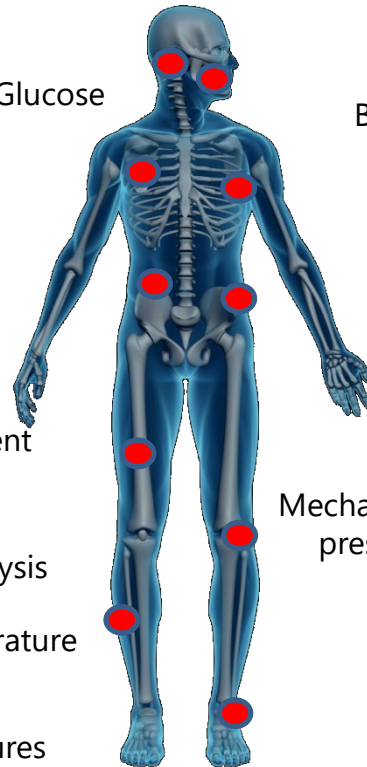


Body core temperature

Skin temperatures

Glucose

VOC



Breathing



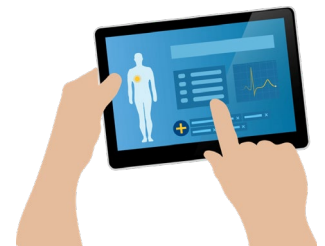
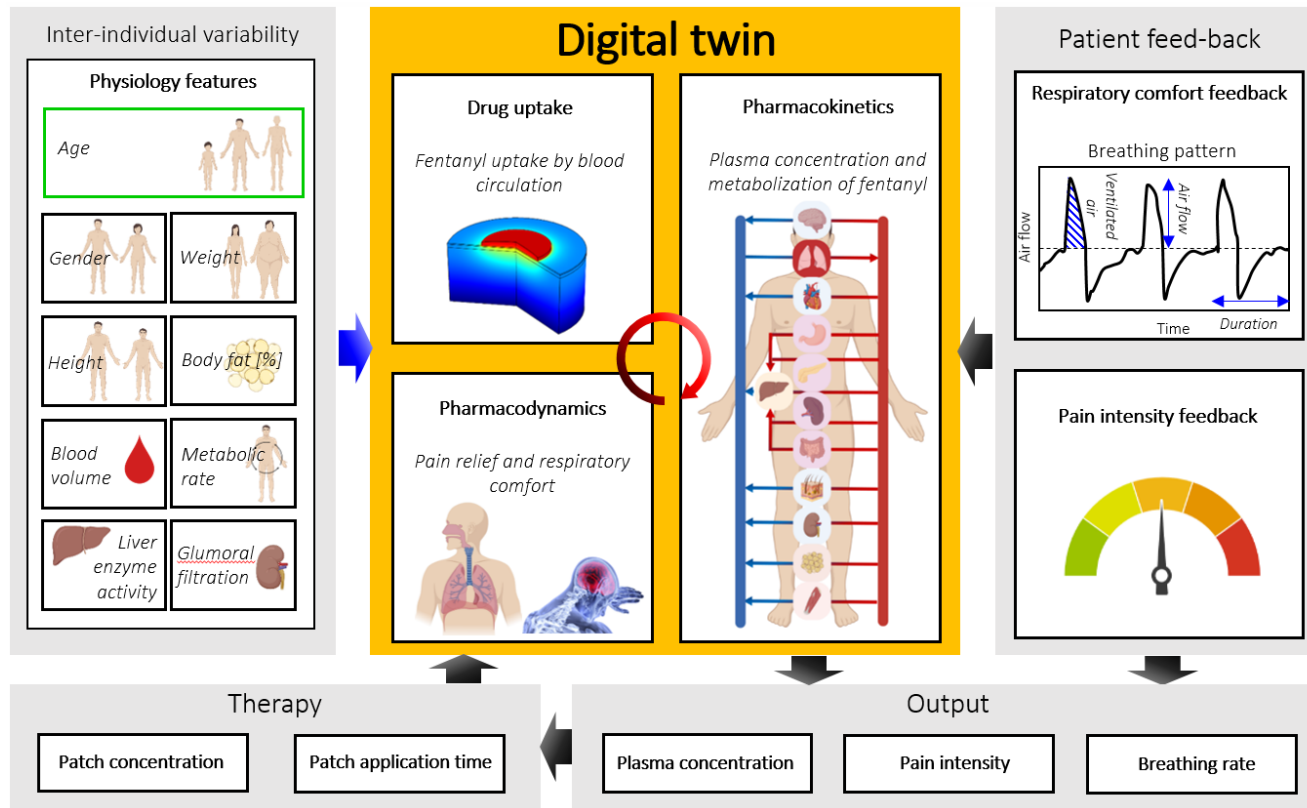
Pulse
ECG
Blood pressure



Mechanical pressure



Digital twins – personalized therapies



Twin-assisted personalized therapy

